



USB 2.0 SERIES

2 Port USB 2.0 Cardbus

EU-PC2C

User's Manual

EDIMAX

Contents

1.0 USB Port Features	P.3
2.0 System Requirement	P.3
3.0 Driver Limitations	P.3
4.0 Driver Installation (Windows XP)	P.4
5.0 Driver Installation (Windows 2000).....	P.10
6.0 Driver Installation (Windows ME).....	P.16
7.0 Driver Installation (Windows 98/98SE).....	P.19

Introduction

Add a USB Cardbus device to your PC

Instantly add USB peripherals to your Notebook. Never open your computer case again after you have your USB Port (PCMCIA) card installed and say good-bye to confusing cables.

The USB Port (Universal Serial Bus) allows you to instantly connect USB devices to your computer.

The USB Port will allow you to attach 2 USB devices instantly.

You never have to worry about running out of slots in your computer or those confusing IRQ' s again.

You can also "Hot Swap" your USB devices. What does this mean? You never have to power down your PC to install hardware again. Gamers can switch joysticks on the fly. Welcome to the USB Revolution.

1.0 USB Port Features

The CardBus is the trade name for an advanced PC Card (also known as PCMCIA card) specification. It fits in a slot like a conventional PC card and 32-bit path is used for data transfer. It supports the following I/O features:

- 2 USB ports (root hub and two or four down stream function ports)
- Auto detect speeds and connections of devices
- Support High Speed Data Transfer Rates of up to 480 Mbps
- Integrated physical layer transceivers
- Normal and low power operating modes
- Fully Plug and Play compatible
- OHCI (Open Host Controller Interface) specification V1.0 register compatible
- USB specification V.1.0 compatible
- Provide one USB power cable

***** If you use PCMCIA USB card. At normal time, you don' t need to use the USB power cable that you connect to USB devices. Only in one case that system request more power and please use that!***

2.0 System Requirements

This setup program will install the driver for NEC USB 2.0 Host Controller. Before you start to run the setup program, please make sure your computer is an IBM PC-compatible system.

This driver can be used either the following operating systems:

- Windows98
- Windows98 Second Edition.
- Windows Millennium.
- Windows 2000.
- Windows XP.

3.0 Driver Limitations

Current limitations of the driver are: Composite devices and Hi-Speed Isochronous Transfers are currently not supported.

4. Driver Installation (Windows XP)

1. Please make sure this PCI/PCMCIA card has been installed on your system correctly.

When starting Windows XP, it will display the follow screen, please select **'Install from a list or specific location [Advanced]'**.

Found New Hardware Wizard



Welcome to the Found New Hardware Wizard

This wizard helps you install software for:

NEC PCI to USB Enhanced Host Controller



If your hardware came with an installation CD or floppy disk, insert it now.

What do you want the wizard to do?

- Install the software automatically (Recommended)
- Install from a list or specific location (Advanced)

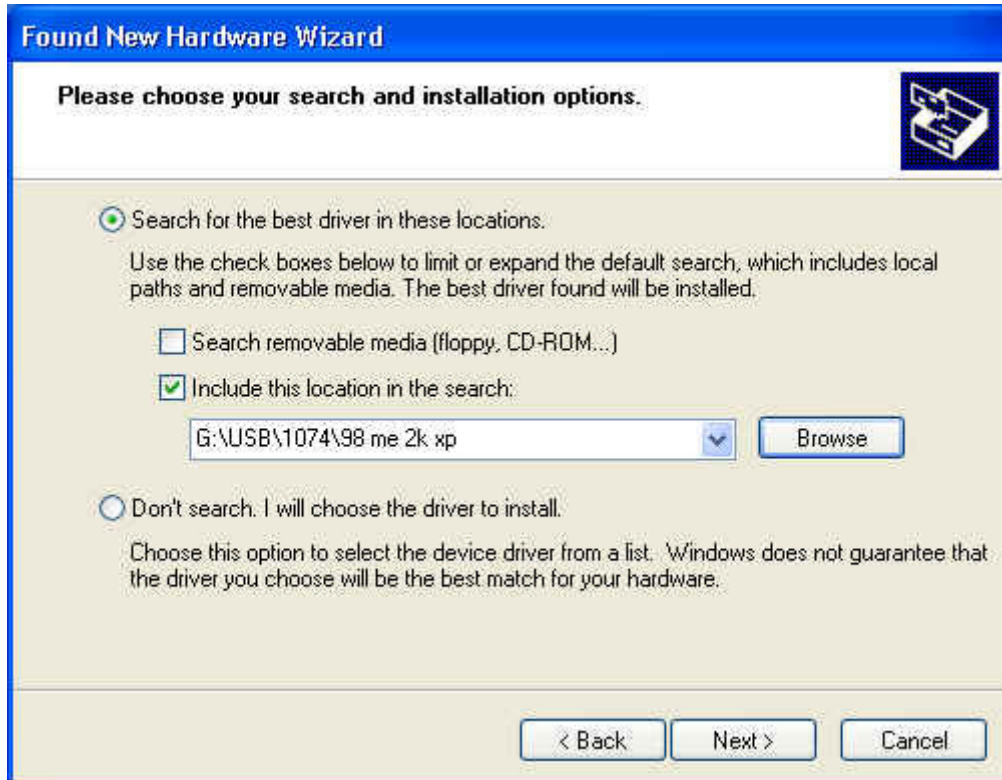
Click Next to continue.

< Back

Next >

Cancel

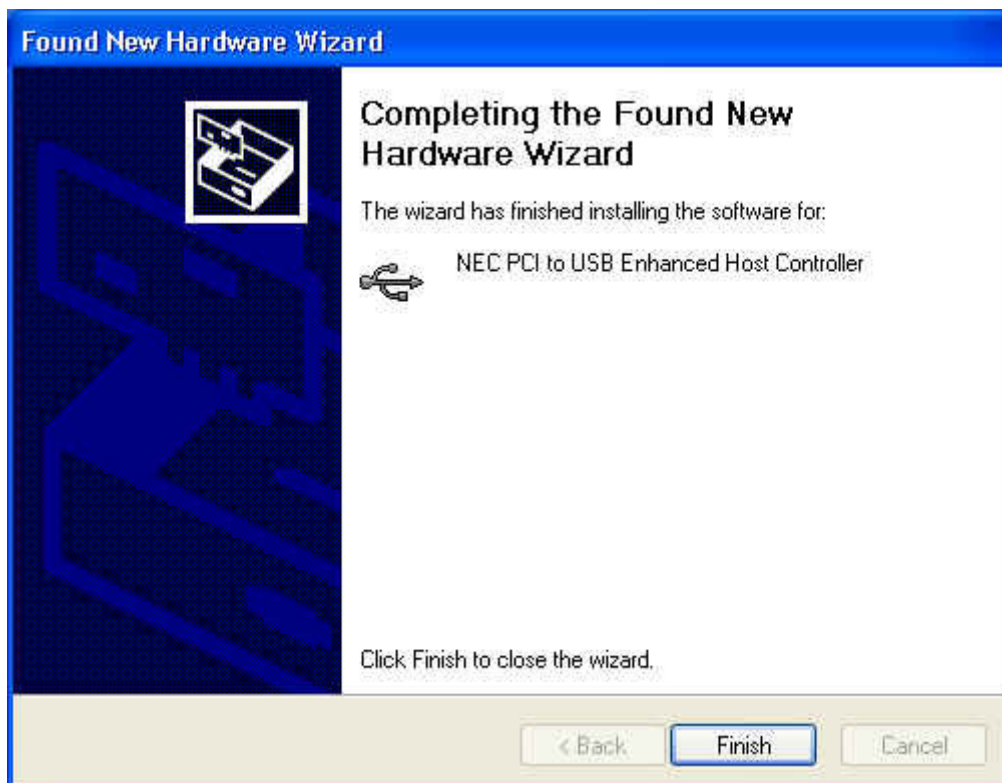
2. Insert the “Driver CD” into the CD-ROM and select the “Include this location in the search”. Please use the **Browse** to change the path to “*your cdrom driver:\USB\tem\98 me 2k xp*”.



3. When display Hardware Installation screen, Press “Continue Anyway”.



4. Wait a moment to install files into your system. Then press “Finish”.



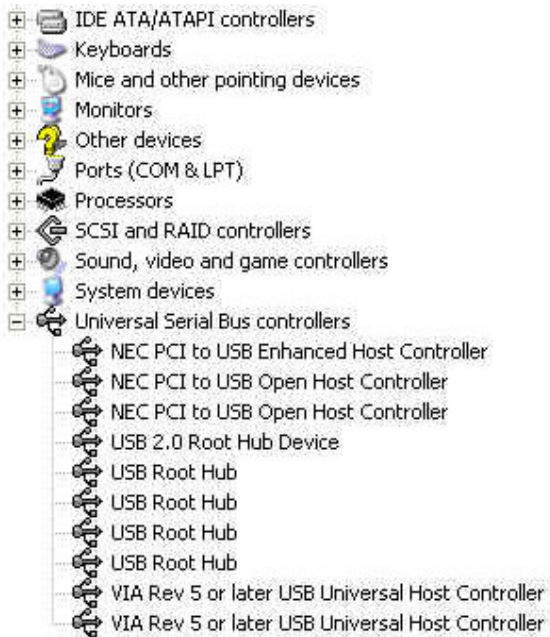
5. To check your device from “Device Manager”. Press “Start? My Computer? Properties”.



6. Open “Device Manager” and check if your device works.



7. Note! If there is a yellow exclamation mark on “NEC PCI to USB Enhanced Host Controller” or “USB 2.0 Root Hub Device”, please remove this item from the “Device Manager” by clicking the “Uninstall” button and click “Refresh” to re-install this driver again.



5.0 Driver Installation (Windows 2000)

1. Please make sure this PCI/PCMCIA card has been installed on your system correctly.

When starting Windows 2000, the system will find “**Universal Serial Bus (USB) Controller**”.



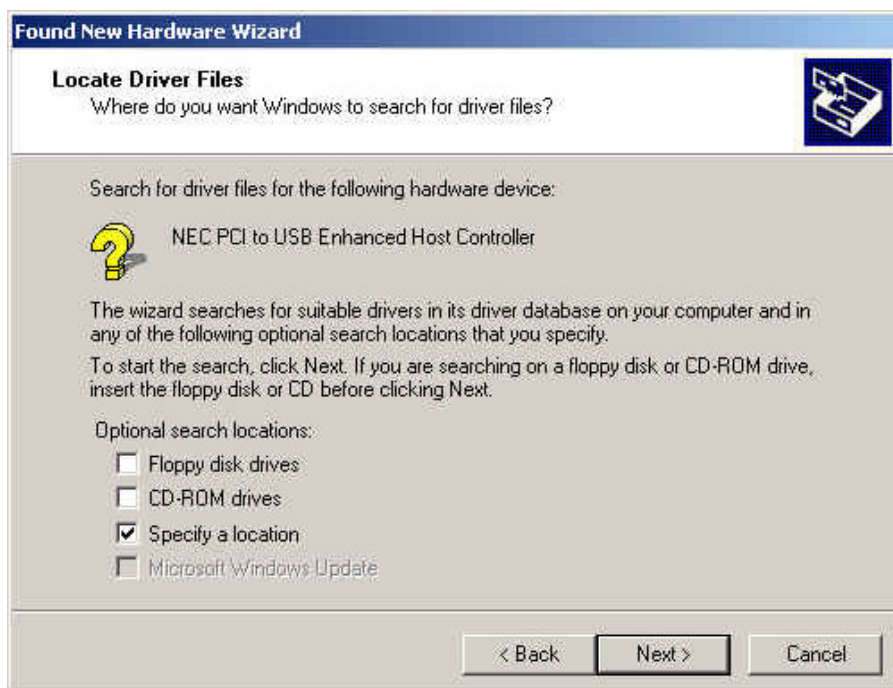
2. Press “**Next**”.



3. Select **“Search for a suitable driver for my device [recommended]”** and press **“Next”**.



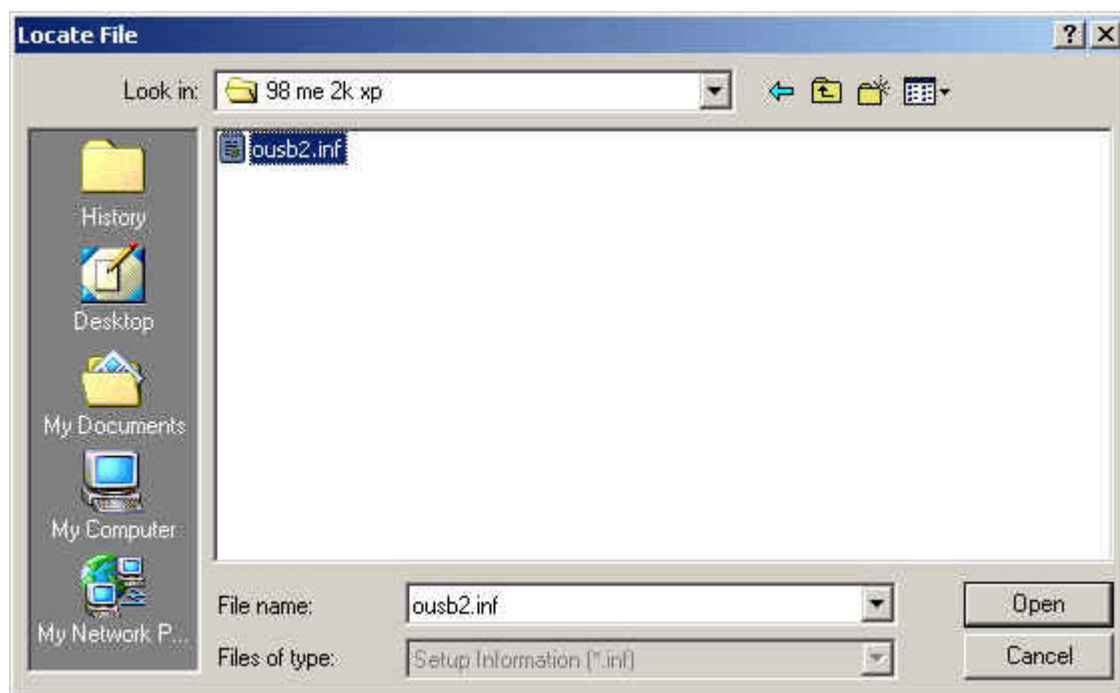
4. Select **“Specify a location”** and press **“Next”**.



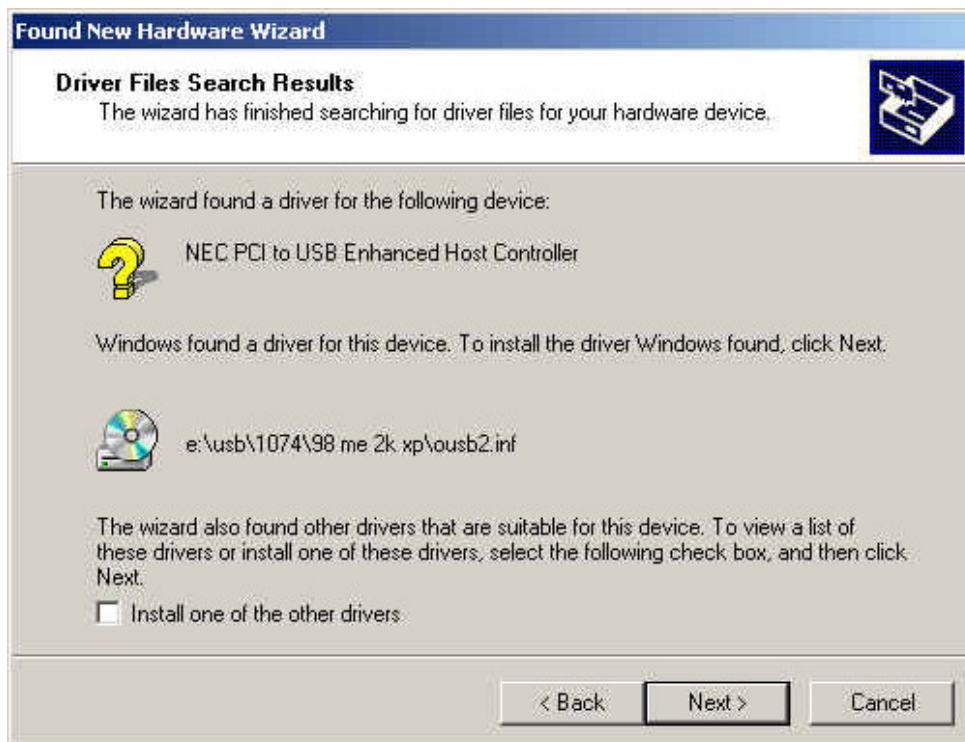
5. Insert the “Driver CD” into the CD-ROM and use the **Browse** to change the path to “*your cdrom driver:\USB\Item\98 me 2k xp*”.



6. Choose the “**ousb2.inf**” file and press “**Open**”.



7. Press "Next".

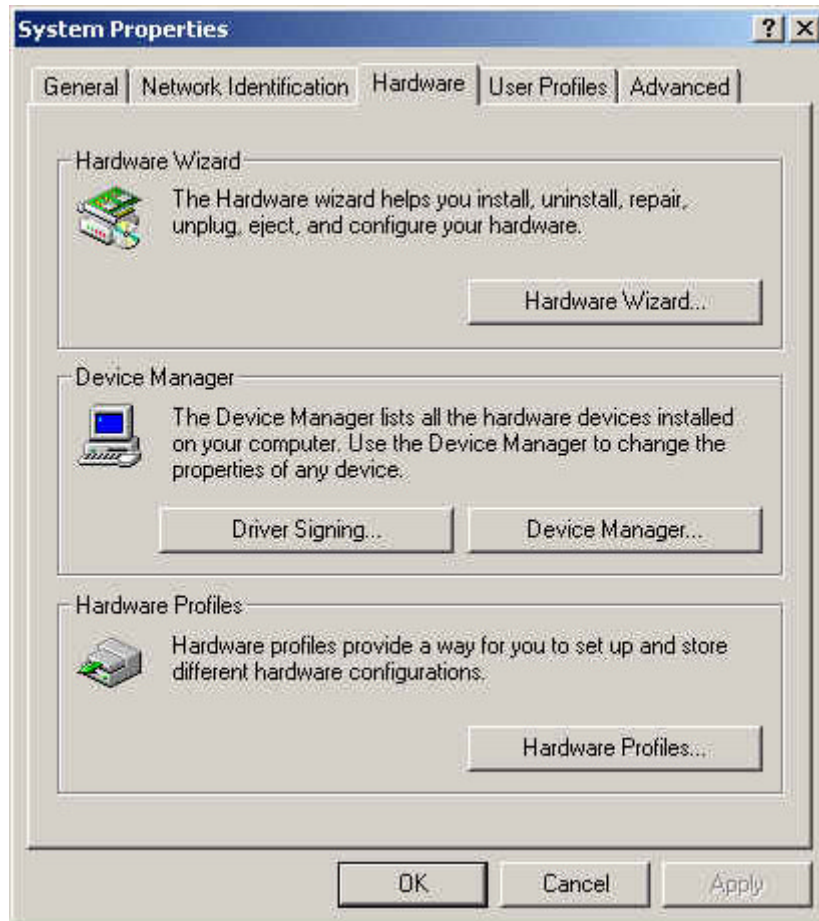


8. Press "Finish".



9. To check your device from “Device Manager”. Press “Start? My Computer? Properties”.

Open “Device Manager” and check if your device works.



10. Note! If there is a yellow exclamation mark on “NEC PCI to USB Enhanced Host Controller” or “USB 2.0 Root Hub Device”, please remove this item from the “Device Manager” by clicking the “Uninstall” button and click “Refresh” to re-install this driver again.



6. Driver Installation (Windows ME)

1. Please make sure this PCI/PCMCIA card has been installed on your system correctly.

When starting Windows ME, it will display the follow screen, please select “**Specify the location of the driver [Advanced]**”.



2. Select “**Specify a location**”. Insert the “Driver CD” into the CD-ROM and use the **Browse** to change the path to “*your cdrom driver:\USB\tem\98 me 2k xp*”. Press “**Next**”.

Add New Hardware Wizard



Windows will search for new drivers in its driver database on your hard drive, and in any of the following selected

Search for the best driver for your device. (Recommended).

Removable Media (Floppy, CD-ROM...)

Specify a location:

E:\USB\1074\98 me 2k xp

Browse

Display a list of all the drivers in a specific location, so you can select the driver you want.

< Back

Next >

Cancel

3. Press **“Next”**



4. Press **“Finish”**.

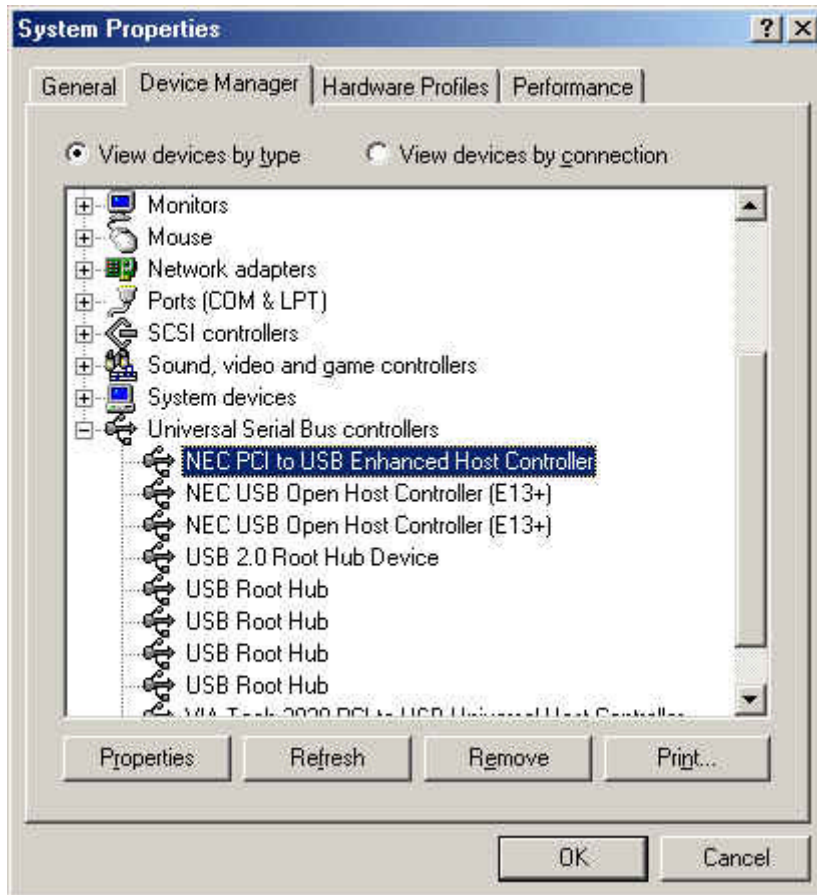
Note! This will restart your system. Please remember to close other programs before you click “Finish” button.



5. After restarting your system, please check if your device works.

Note:

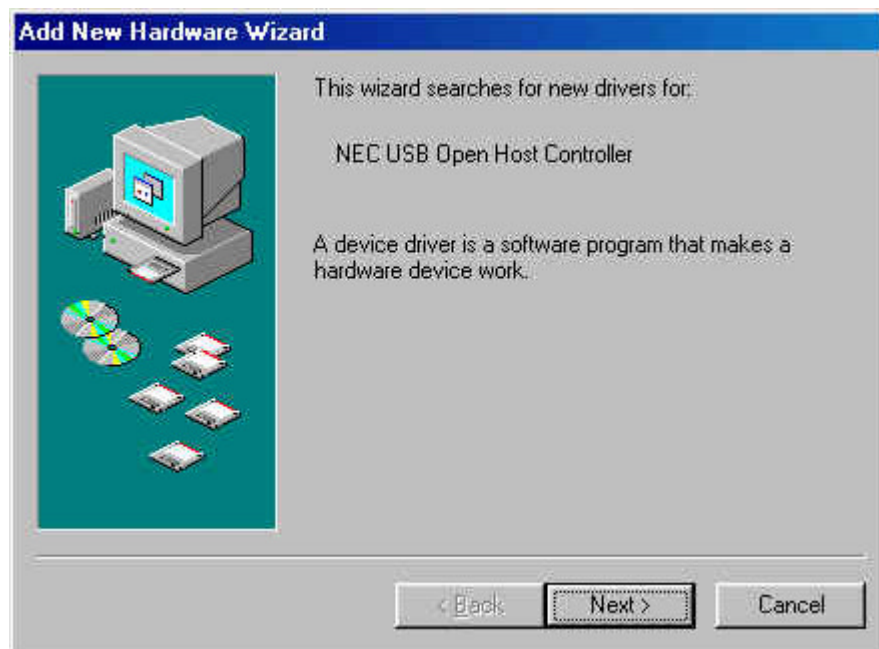
- Note! If there is a yellow exclamation mark on “NEC PCI to USB Enhanced Host Controller [E13+]” or “USB 2.0 Root Hub Device”, please remove this item from the “Device Manager” by clicking the “Uninstall” button and click “Refresh” to re-install this driver again.



7.0 Driver Installation (Windows 98/98SE)

1. Please make sure this PCMCIA card has been installed on your system correctly.

When starting Windows 98/98SE, the system will find the new hardware. Press **“Next”**.



2. Select “Search for the best driver for your device [Recommended] and press **“Next”**.

Add New Hardware Wizard



What do you want Windows to do?

- Search for the best driver for your device.
[Recommended].
- Display a list of all the drivers in a specific location, so you can select the driver you want.

< Back

Next >

Cancel

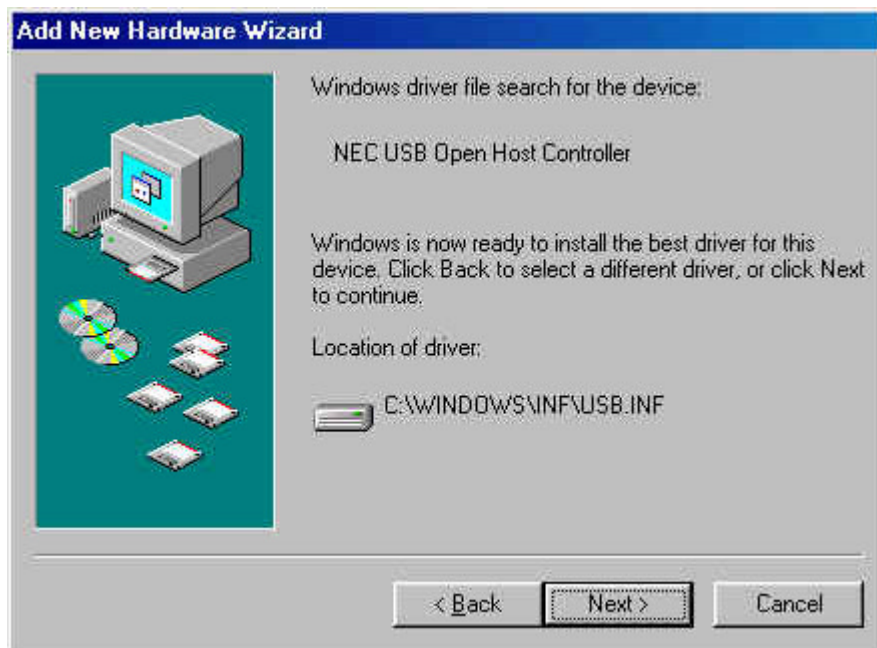
3. Select “**Specify a location**”. Insert the “Driver CD” into the CD-ROM and use the **Browse** to change the path to “*your cdrom driver:\USB\tem\98 me 2k xp*”. Press “**Next**”.



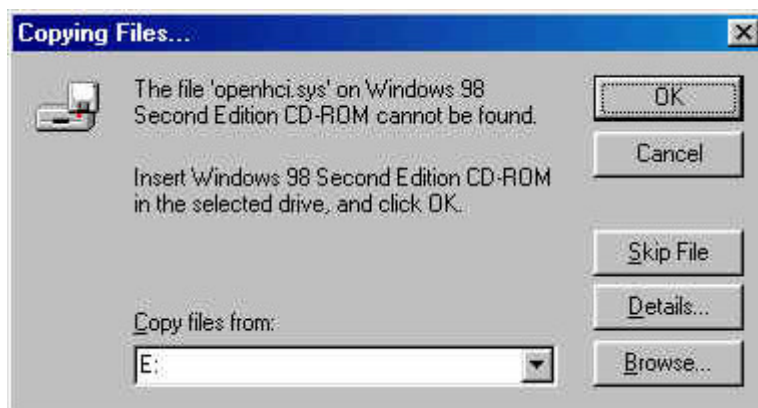
4. Press “**Next**”.



5. Press **Next**.



6. The system will ask you where is the Windows 98/SE CD-ROM ? Please insert the Windows 98/SE CD and use **Browse** item to change the path.



7. Press “**Finish**” and system will find the new hardware again. Please repeat Step 1 to Step 6.



8. When display the follow screen, press “**Next**”.



9. Press “Next” then finished the driver install steps.



10. After restarting your system, please check if your device works.

Note! If there is a yellow exclamation mark on “NEC PCI to USB 2.0 Enhanced Host Controller” or “USB 2.0 Root Hub Device”, please remove this item from the “Device Manager” by clicking the “Uninstall” button and click “Refresh” to re-install this driver again.



