



2-Way Audio



Motion & Sound Detection



microSD Slot



Built-In Lullaby



Temperature & Humidity Detection

Smart



IC-7113W

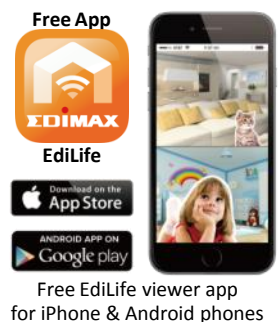
Smart HD Wi-Fi Pan/Tilt Network Camera with Temperature & Humidity Sensor, Day & Night

The Edimax IC-7113W 720p HD Pan and Tilt Wi-Fi network camera is a versatile monitoring device ideal for monitoring your home, shop or factory during the daytime and at night. With Edimax Plug-n-View technology, no complicated setup is required and you can easily connect the camera to the cloud and monitor remotely from a smartphone, tablet or laptop.

The IC-7113W features a motion & sound detection system, two-way audio, built-in microphone & speaker, built-in lullaby, temperature & humidity sensor and a microSD/SDHC card slot. Motion and sound-triggered recording ensure that you capture any unusual activity and the wireless user interface allows for easy installation and monitoring. And with the EdiLife app, the fully-featured IC-7113W enables your smartphone or tablet to transform into a baby or mobile monitor.

Plug-n-View for Easy 24/7 Remote Monitoring

Edimax Plug-n-View technology makes it easy for you to keep an eye on your yard, garage, shop, factory or other assets wherever you go. With Plug-n-View technology you can connect your network camera to the cloud in a few simple steps and access it remotely with a smartphone, tablet, or computer no matter where you are.



Night Vision

With a light sensor, image sensor and eight infrared LEDs the IC-7113W is well equipped to meet indoor security and surveillance needs - even in low-light and night-time conditions. And with automatic ICR (IR Cut Filter Removal), infrared light is filtered out during the day time (while allowed to pass at night) ensuring exceptional video color quality at all times.



8 IR LEDs Light Sensor

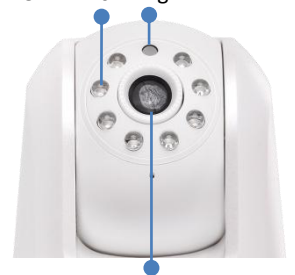


Image Sensor & ICR

Smart HD Wi-Fi Pan/Tilt Network Camera with Temperature & Humidity Sensor, Day & Night

IC-7113W

Tilt $\pm 120^\circ$

Pan $\pm 355^\circ$



Motorized Pan & Tilt

With the ability to pan ± 355 degrees and tilt ± 120 degrees, the IC-7113W gives you a wider viewing angle than the average network camera. You can control the camera's pan and tilt remotely via a web browser and smartphone app.

Motion Detection Triggered Recording

The powerful built-in multi-area motion detection system ensures that you have evidence of any unusual activity. You can pre-define multiple areas in the monitored range for motion detection; and when motion is detected in the specified areas, the network camera will produce video footage of the event immediately – storing the data on a microSD/SDHC card or sending it automatically to email or FTP.



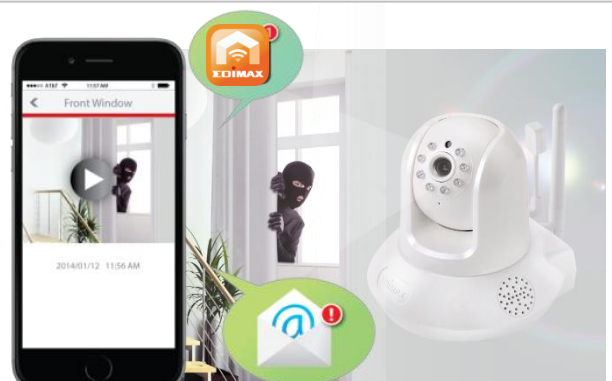
Sound Detection Triggered Recording

The IC-7113W also features sound detection capabilities with a built-in microphone. When sound is detected, the network camera will take video footage of the event immediately in the same manner as with motion detection, and store the files locally on a microSD/SDHC card or send to email and FTP. Integrated sound offers a further level of security than motion-detection and visual imaging alone, providing critical real-time or post-event information about a situation, particularly in scenarios where events occur outside the camera's field of vision. The sounds of baby crying, dog barking, breaking windows, doors or anything else suspicious can still be registered even in situations where the event can't be seen.



Push Notifications with Video Alerts

Push notifications are triggered by sound or motion detection, and when a detection system is triggered the IC-7113W additionally sends video alerts to email or microSD card. If the camera ever goes offline, push notifications are also sent when the camera comes back online to keep users informed about any unusual activity.



Smart HD Wi-Fi Pan/Tilt Network Camera with Temperature & Humidity Sensor, Day & Night

IC-7113W

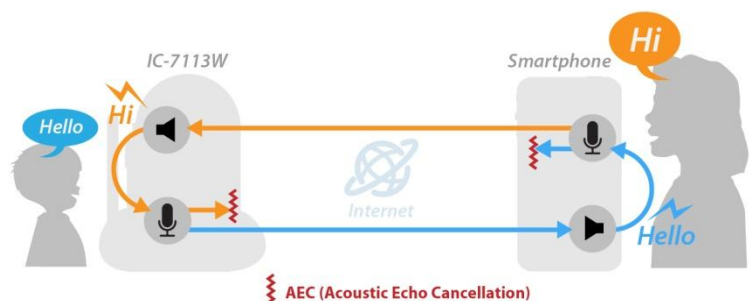
Two-Way Audio

The network camera incorporates a speaker and microphone for two-way audio support, so you can remotely communicate at the camera's location such as comforting a baby with mom's voice or activating a deterrent alarm - a vital, cost-saving and potentially even life-saving additional security tool. The speaker volume can be controlled by the smartphone app or web-based UI.



Acoustic Echo Cancellation

The IC-7113W's Acoustic Echo Cancellation feature ensures crisp and clear sound quality during two-way audio communications. Industry standard echo-cancelling technology usually found in telephony and VoIP systems provides a new level of sound quality for home network cameras and allows you to listen, talk and communicate remotely with the camera's location without sound quality issues causing interruptions or difficulty. When trusted with home security or checking on your child, the IC-7113W performs at the highest level and lets your hear exactly what's going on.



Built-In Lullaby

Play the built-in lullaby using the smartphone app or web-based UI to soothe your child to sleep. Additional lullabies, songs, bedtime stories, or even a pre-stored recording of mom's voice on the external microSD card can also be played through the network camera speaker to the kids. The speaker volume can be controlled by the smartphone app or web-based UI.



Smart HD Wi-Fi Pan/Tilt Network Camera with Temperature & Humidity Sensor, Day & Night

IC-7113W

Temperature & Humidity Detection and Alerts

Built-in temperature and humidity sensors can sense the surrounding environment and provide a live view of the environment's status in the smartphone app or web-based UI. When the temperature or humidity is too high or too low, the network camera can also send out alerts through smartphone push notifications or emails, ensuring the most comfortable environment for you and your family.



High Quality Videos

The IC-7113W is built with a wide F2.0 lens which covers an impressive diagonal viewing angle of 78 degrees. With a megapixel CMOS sensor, the network camera is able to capture 720p (1280 x 720) videos at 30 frames per second.



MicroSD/SDHC Card Slot for Local Storage

A built-in microSD/SDHC card slot supports cards up to 32GB for local storage and backup.

*Minimum 8GB capacity microSD recommended. Less than 2GB capacity is not supported.



SOFTWARE FEATURES

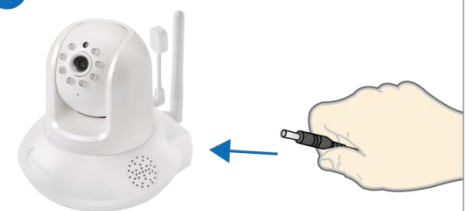
- Easy remote monitoring via iPhone, iPad, Android, PC & Mac
- High-speed H.264 & MJPEG video compression
- Push notifications with video alerts when motion & sound is detected, for better awareness than snapshots alone
- Push notifications for temperature & humidity alerts when above or below preset levels
- Save event videos to microSD card, FTP or email
- Pre & post-recording on motion detection
- Viewer software to access 16 network cameras simultaneously
- Manual, scheduled or cycled recording

Keep An Eye On What You Care About The Most, Anywhere & Anytime



Three Steps for Easy Smartphone Setup

- 1 Power on network camera.



- 2



- Download the EdiLife app from the App Store or Google Play.

- 3 Pair the camera with your app & Wi-Fi and watch a live stream from anywhere!



Smart HD Wi-Fi Pan/Tilt Network Camera with Temperature & Humidity Sensor, Day & Night

IC-7113W
TECHNICAL SPECIFICATIONS

Function	Management	Interface
<ul style="list-style-type: none"> Easy remote monitoring via iPhone, iPad, Android, PC & Mac Pan ± 355 degrees and tilt ± 120 degrees viewing angle Supports dynamic DNS service IR filter embedded Built-in microphone and speaker for two-way audio Motion/sound detection recording and alerts to microSD/SDHC card, email and FTP Built-in lullaby MicroSD/SDHC card slot for local storage 	<ul style="list-style-type: none"> EdiView Finder (Windows/Mac) 16-channel viewer Web management interface Firmware upgradable iPhone & iPad viewer app Android viewer app 	<ul style="list-style-type: none"> Ethernet (RJ-45) port Power jack Reset/WPS button Antenna x 2 (1 external & 1 internal) MicroSD/SDHC card slot Light sensor Microphone Speaker Temperature and humidity sensor IR LEDs: 8 LED indicators
Video	Video Settings	Supported Protocols
<ul style="list-style-type: none"> High-speed H.264 & MJPEG video compression 1280 x 720 up to 30 fps 640 x 360 up to 30 fps 320 x 176 up to 30 fps 	<ul style="list-style-type: none"> Resolution: HD (1280 x 720), VGA (640 x 360), QVGA (320 x 176), Frame rate: 5, 10, 15, 20 or 30 fps 	<ul style="list-style-type: none"> IPv4, HTTP, TCP, ICMP, RTSP, RTP, UDP, RTCP, SMTP, SNMP, FTP, DHCP, ARP, DNS, PPPoE
Standards	RF Output Power	IR LEDs
<ul style="list-style-type: none"> Fast Ethernet IEEE 802.3/802.3u Wireless IEEE 802.11b/g/n 	<ul style="list-style-type: none"> 11b: 16dBm-18dBm 11g: 14dBm-16dBm 11n: 11dBm-13dBm 	<ul style="list-style-type: none"> IR LEDs for night illumination up to 15 feet
Memory	Operating Conditions	Power
<ul style="list-style-type: none"> 8MB flash 128MB SDRAM 	<ul style="list-style-type: none"> 0-40°C Humidity: 10-90% RH (non-condensing) 	<ul style="list-style-type: none"> 12V DC x 1A
Dimensions	Weight	Certifications
<ul style="list-style-type: none"> 128 (L) x 112m (W) x 116 (H) mm 	<ul style="list-style-type: none"> 251g 	<ul style="list-style-type: none"> FCC, CE

APPLICATION DIAGRAM

HARDWARE INTERFACE


Actual viewing resolution and frame rate depend on connection speed. Maximum performance, actual data rates, and coverage will vary depending on network conditions and environmental factors. Product specifications and design are subject to change without notice. Copyright © 2015 Edimax Technology Co. Ltd. All rights reserved.

